

Overview

Summary

Task: Minimize a function over an *intersection* of convex sets.

Problem: Projections or linear minimization oracle (LMO) over the intersection is *expensive*. Projection onto each individual set is *expensive*.

Our solution:

- Minimize a **smooth** function over an intersection of constraints.
- Requires **linear minimization oracles** over **individual constraints**.
- Based on the **Augmented Lagrangian Method**.

Motivating applications: Multiple sequence alignment. Structured SVM. Simultaneously sparse and low rank matrices.

Related work

Algorithm (GDMM) proposed in Yen et al. [4, 3], Huang et al. [2] but restricted to polytopes and simple (linear and quadratic) functions.

Contributions

- Extension of GDMM for general convex sets.
- Major fix of the previous proofs.

Problem Formulations

Initial Problem

$$\text{minimize}_{\mathbf{x}^{(1)}, \dots, \mathbf{x}^{(k)}} f(\mathbf{x}^{(1)}, \dots, \mathbf{x}^{(k)}),$$

$$\mathbf{x}^{(k)} \in \mathcal{X}_k, k \in [K], \sum_{k=1}^K A_k \mathbf{x}^{(k)} = 0,$$

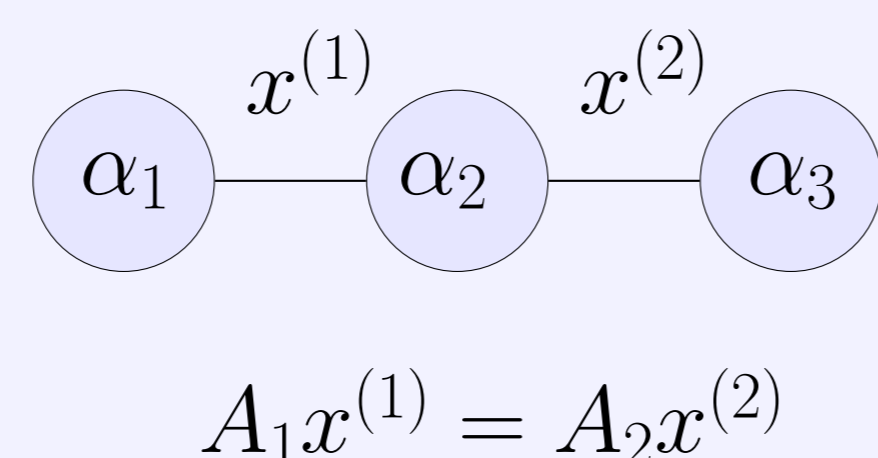
- f convex smooth function.
- $\mathcal{X}_k, k \in [K]$, convex compact sets.
- $A_k \in \mathbb{R}^{d \times d_k}, k \in [K]$.

Examples

Intersection of two sets:

$$n = 2, A_1 = -A_2 = I_n \Rightarrow \mathbf{x}^{(1)} = \mathbf{x}^{(2)}$$

Marginal polytope:



Augmented Lagrangian formulation

- Augmented Lagrangian trick to get rid of $\sum_{k=1}^K A_k \mathbf{x}^{(k)} = 0$.
- Introduce M s.t. $M\mathbf{x} = 0 \Leftrightarrow \sum_{k=1}^K A_k \mathbf{x}^{(k)} = 0$ and the function

$$\mathcal{L}(\mathbf{x}, \mathbf{y}) := f(\mathbf{x}) + \langle \mathbf{y}, M\mathbf{x} \rangle + \frac{\lambda}{2} \|M\mathbf{x}\|^2.$$

- $\max_{\mathbf{y} \in \mathbb{R}^d} \mathcal{L}(\mathbf{x}, \mathbf{y}) = f(\mathbf{x})$ if $M\mathbf{x} = 0$ or $+\infty$ otherwise.

Augmented Lagrangian formulation of our initial problem,

$$\text{minimize}_{\mathbf{x}^{(1)}, \dots, \mathbf{x}^{(K)}} \max_{\mathbf{y} \in \mathbb{R}^d} \mathcal{L}(\mathbf{x}^{(1)}, \dots, \mathbf{x}^{(K)}, \mathbf{y})$$

$$\text{s.t. } \mathbf{x}^{(k)} \in \mathcal{X}_k, k \in \{1, \dots, K\}.$$

Algorithm

FW-AL

Standard AL method

$$\mathbf{x}_{t+1} = \arg \min_{\mathbf{x} \in \mathcal{X}} \mathcal{L}(\mathbf{x}, \mathbf{y}_t),$$

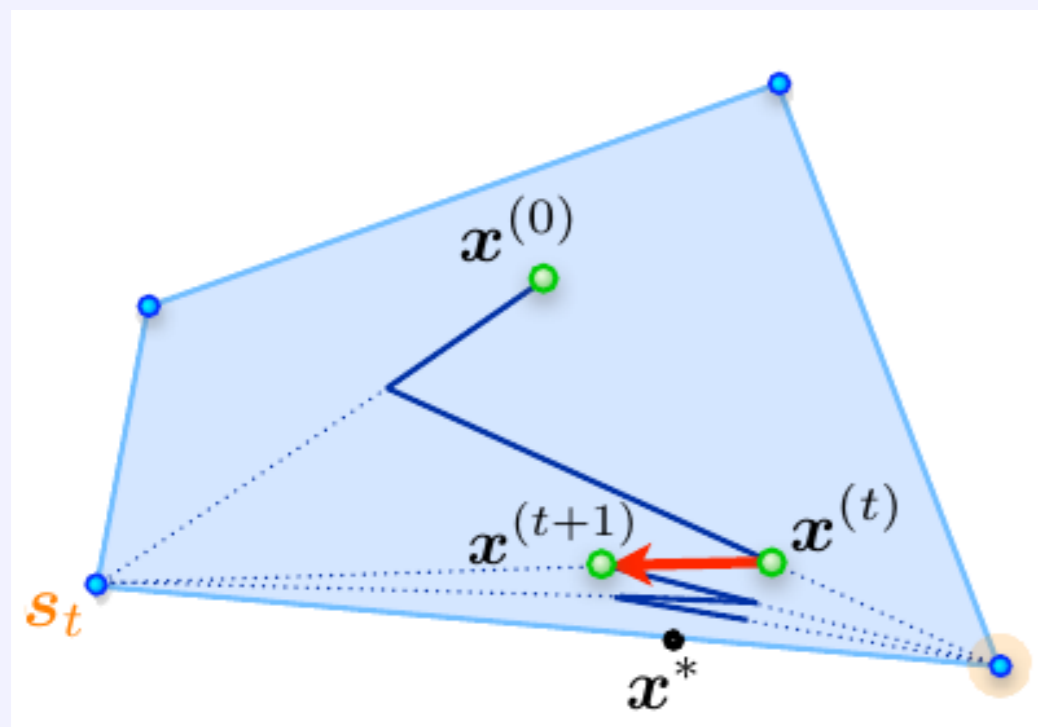
$$\mathbf{y}_{t+1} = \mathbf{y}_t + \eta_t M \mathbf{x}_{t+1},$$

Replace arg min steps by FW steps:

$$\mathbf{x}_{t+1} = \text{FW}(\mathbf{x}_t; \mathcal{L}(\cdot, \mathbf{y}_t)).$$

$$\mathbf{y}_{t+1} = \mathbf{y}_t + \eta_t M \mathbf{x}_{t+1}.$$

FW algorithm



Algorithm 1 FW (one step) : [1]

- 1: **input:** (\mathbf{x}, φ)
- 2: Compute $\mathbf{r} \leftarrow -\nabla \varphi(\mathbf{x})$
- 3: Compute $\mathbf{s} \leftarrow \arg \min_{\mathbf{s} \in \mathcal{X}} \langle \mathbf{r}, \mathbf{s} \rangle$
- 4: $\gamma \in \arg \min_{\gamma \in [0, 1]} \varphi(\mathbf{x} + \gamma(\mathbf{s} - \mathbf{x}))$
- 5: Update $\mathbf{x} \leftarrow (1 - \gamma)\mathbf{x} + \gamma\mathbf{s}$
- 6: **return:** \mathbf{x}

Theoretical Results

Assumption

Slater's condition: $\exists \mathbf{x}^{(k)} \in \text{relint}(\mathcal{X}_k), k \in [K]$ s.t. $\sum_{k=1}^K A_k \mathbf{x}^{(k)} = 0$.

For general convex sets

With decreasing step size $\eta_t := O(\frac{1}{t+1})$,

$$\text{subopt: } \Delta_t \leq \frac{O(1)}{t}, \quad \text{feasibility: } \min_{t_0 \leq s \leq t} \|M\mathbf{x}_s\|^2 \leq \frac{O(1)}{t}.$$

For \mathcal{X} a polytope

With small enough constant step size η_t :

$$\Delta_t \leq \frac{\Delta_{t_0}}{(1 + \kappa)^{t-t_0}}, \quad \|M\mathbf{x}_{t+1}\|^2 \leq \frac{O(1)}{(1 + \kappa)^{t-t_0}}.$$

Uses a variant of FW with away-step and holds only for generalized strongly convex function.

Motivating Applications

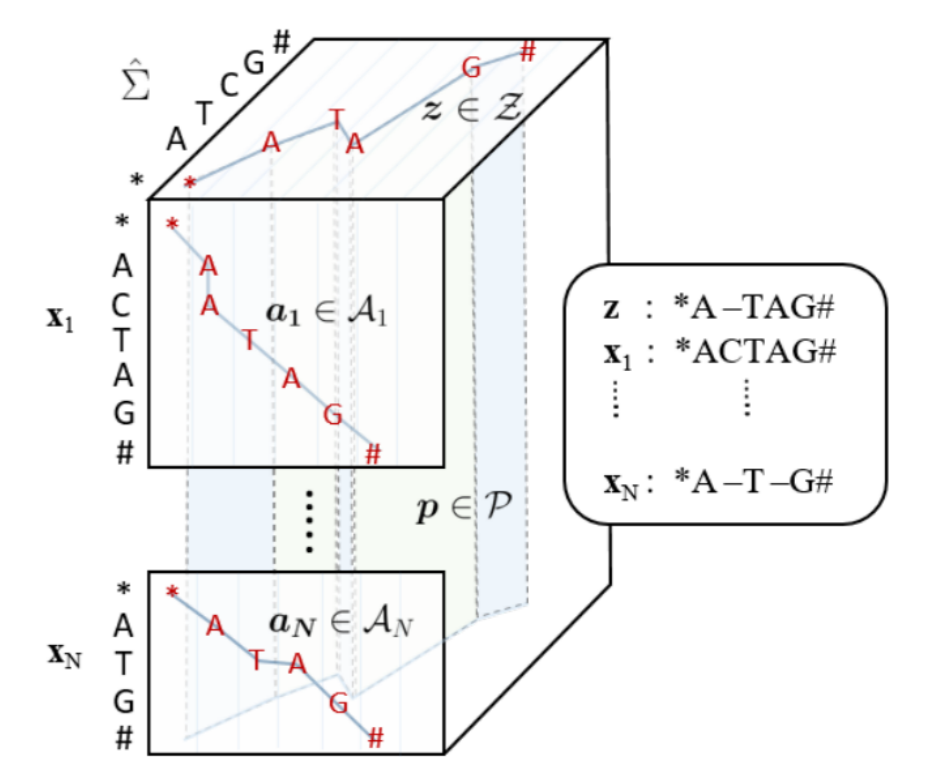
Multiple Sequence Alignment

Proposed by Yen et al. [4]:

$$\min_{W \in \mathcal{A} \cap \mathcal{P}} \langle W, D \rangle$$

D : cost matrix. \mathcal{A} : alignment constraint.

\mathcal{P} : consensus constraint.



Structured SVM

Proposed by Yen et al. [3]:

$$\text{dual problem: } \min_{\alpha_f \in \Delta^{|\mathcal{V}_f|}} \frac{1}{2} \sum_{F \in \mathcal{T}} \|A_F \alpha\|_2^2 - \sum_{j \in \mathcal{V}} \delta_j^\top \alpha_j$$

$$\text{s.t. } M_{f_i} \alpha_f = \alpha_i, \quad f \in F, F \in \mathcal{T}, i \in \mathcal{N}(f).$$

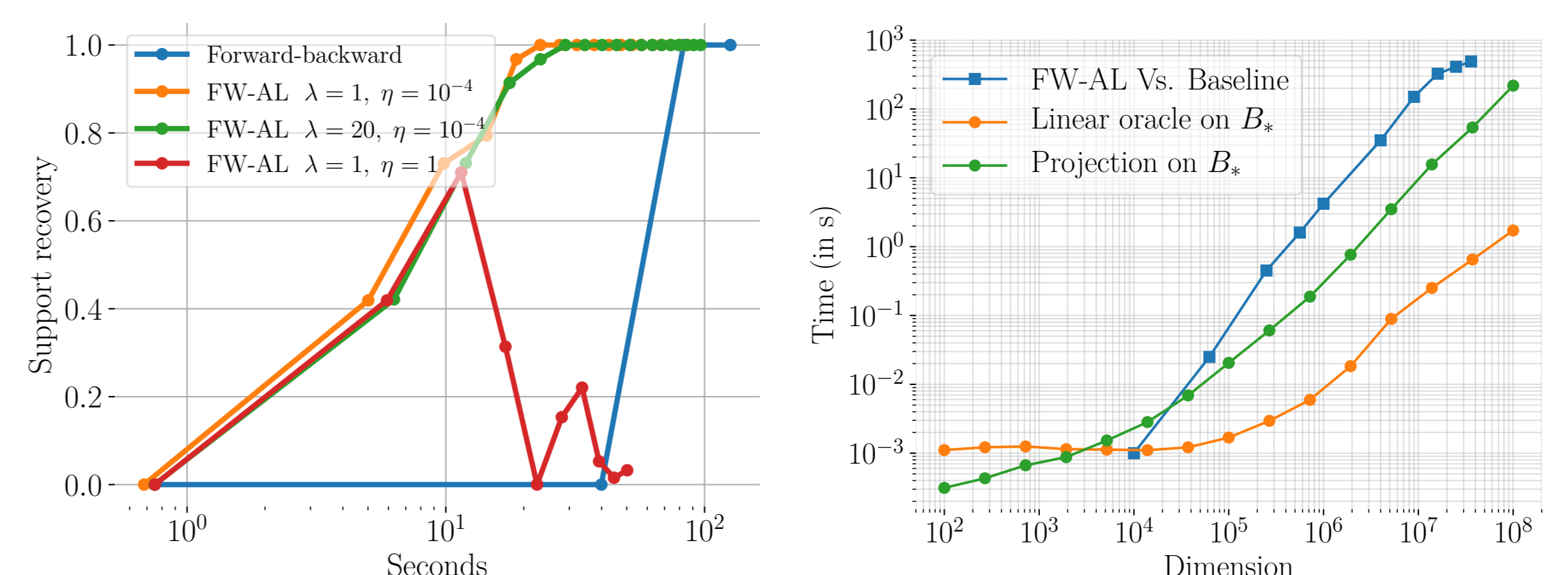
\mathcal{V} : set of variables. \mathcal{T} : set of factor templates. $\mathcal{N}(f)$: neighbors of f .

Simultaneously Sparse and Low Rank Matrices

Given $\hat{\Sigma} \succeq 0$, the objective function is defined as

$$\min_{S \succeq 0, \|S\|_1 \leq \beta_1, \|S\|_* \leq \beta_2} \|S - \hat{\Sigma}\|_2^2.$$

- Oracle over ℓ_1 -ball: largest coefficient $O(d^2)$.
- Oracle over trace-norm all: largest eigen-value $O(d^2/\sqrt{\epsilon})$ (Lanczos).



Percentage of the support recovered by FW-AL and the Forward backward algorithm as a function of time. As the dimension increase the projection take more and more time to be performed.

References

- [1] M. Frank and P. Wolfe. An algorithm for quadratic programming. *Naval Research Logistics*, 1956.
- [2] X. Huang, I. E.-H. Yen, R. Zhang, Q. Huang, P. Ravikumar, and I. Dhillon. Greedy direction method of multiplier for MAP inference of large output domain. In *AISTATS*, 2017.
- [3] I. Yen, X. Huang, K. Zhong, R. Zhang, P. Ravikumar, and I. Dhillon. Dual decomposed learning with factorwise oracle for structural SVM with large output domain. In *NIPS*, 2016b.
- [4] I. E.-H. Yen, X. Lin, J. Zhang, P. Ravikumar, and I. Dhillon. A convex atomic-norm approach to multiple sequence alignment and motif discovery. In *ICML*, 2016a.